

JH-500D Series



Superior by design.

After designing and building more professional recording systems than any other manufacturer, it's only natural for MCI to create new standards of performance in the JH-500D series.

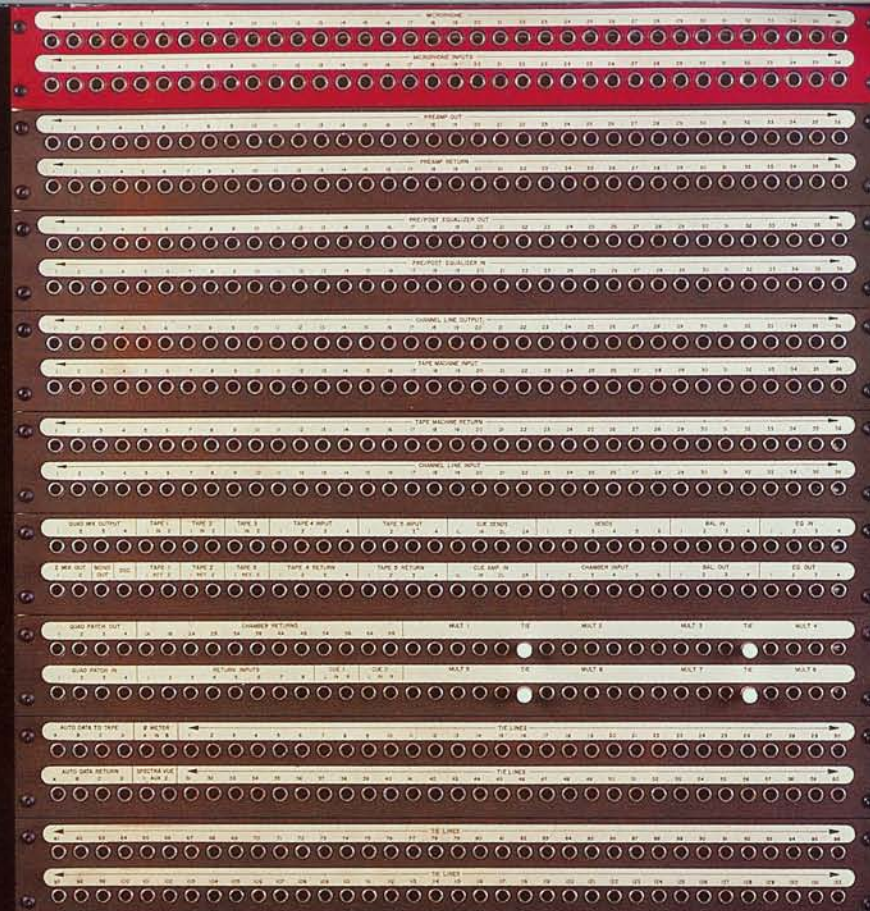
From the moment you first see this new console, you are confident the ergonomic designs which have made MCI famous will help you create the perfect mix.

You bring up the monitors and a new sound quality is heard — clean, true, transparent. New transformerless I/O modules with distortion free circuitry provide all the operational headroom needed to capture the subtle nuances of any instrument or vocalist.

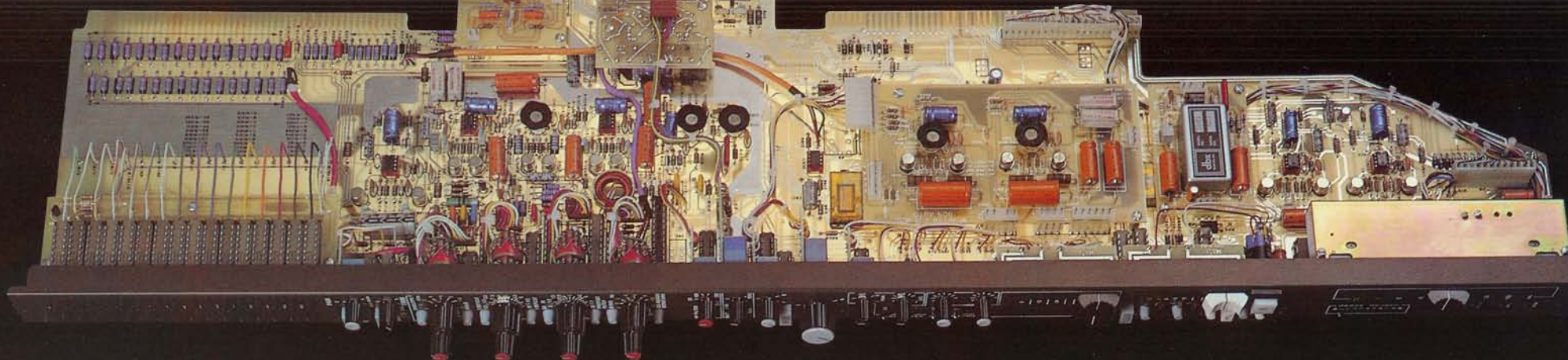
As you use this new console, your respect for it increases, your confidence is assured.

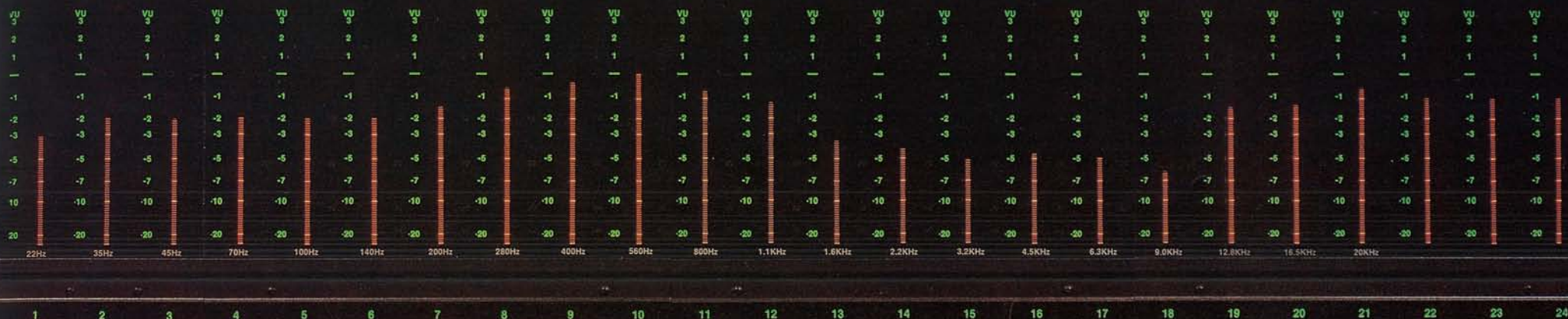
The new JH-500D . . . the ultimate tool for musical artistry.

I/O Module: Input/Output modules are self contained units which can plug into any input position. Inputs and outputs are all balanced, differential, and transformerless.



*Patch Bay: An extensive patch bay is standard, providing tremendous flexibility in any JH-500D console.
(Patchbay shown includes Options 5 and 7)*





Plasma Display: High resolution 100-segment plasma displays can monitor audio or DC levels, and are switchable to either PPM or VU ballistics.

Confidence begins with "in-line" I/O modules, totally transformerless; utilizing the latest in Op-Amp circuitry.

The musically designed equalizer offers you tasteful tailoring of instrumental or vocal sound and timbre, with four band stepped controls for easy resetability. A variable high pass filter is also included, and six separate sends are at your command for foldback and effects.

Your new JH-500D comes equipped with MCI's patented plasma display metering, 32 output assignments, 8 VCA groups, as well as complete monitoring and communications facilities.

Choose your new console from any of six mainframe sizes, then customize your selection from one of the largest option groups available, including a built-in spectrum analyzer, additional equalizers, extra echo returns, a variety of producer's desks, and much, much more.

The JH-500D welcomes you to the world of automated mix-down with a human engineered system that makes automated mixing as natural as hands-on fader control. Available on the JH-500D, the MCI Microprocessor-based automation enables you to create a mix, then modify or recall it totally, all with astonishing ease.

Confidence in this industry-standard system grows with every use, as you begin to appreciate features like independent storage of mutes and fader levels, automatic nulling of faders in the update mode, and no delay accumulation... even during repeated updates.

Your hands touch the impressive array of controls and signal modifiers on any JH-500D console and your eyes follow instantly to MCI's unique plasma display system. This patented technology keeps you in touch with all levels; visually, accurately, and beautifully. Each bar graph is directly above the I/O module it monitors, visually tied in for rapid, error-free indications.

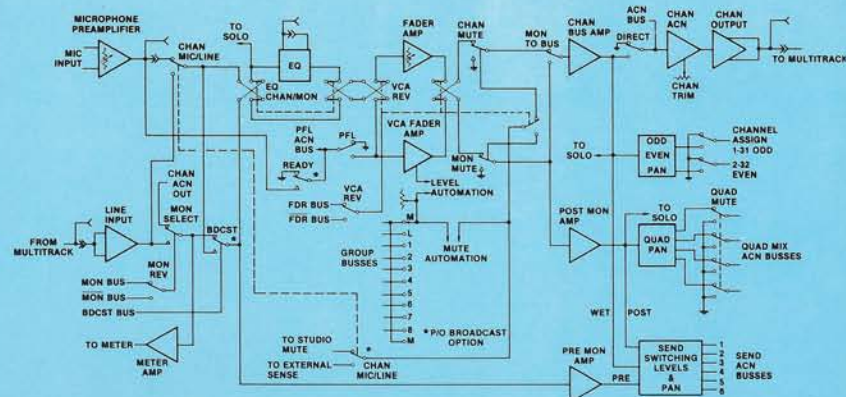
The digitally controlled 100 segment readouts offer resolution superior to

any mechanical meters, with ballistic and scale characteristics you can select. Softly illuminated scale markings from electroluminescent panels complete this display system, providing dramatic counterpoint to the glow of neon display elements.

You can even order the Spectra-Vue option, which enables spectral analysis of any audio signal, either internal or external to the console.

The new JH-500D recording/remixing console. The dream machine of Tomorrow, available Today. From MCI.

Input/Output Module Signal Flow exhibits extreme versatility for Recording, Remix, Live or Broadcast Applications.



JH-500D Console

32 Channel Assignment

Permits output assignment to one or more multitrack recorders, or use as auxiliary effects buses.

Channel Output Trim

Provides level trim of the channel output, including all assignments made to that channel.

Odd/Even Channel Panning

Allows panning between odd and even channel assignments. Enabled by the Pan button.

Direct Switch

Allows assignment directly to the channel output.

Channel Output Solo

Activates a mono solo of the channel output.

Equalizer

A four band EQ with two overlapping mid frequency sections and a high pass filter.

High Frequency

Selectable for peak or shelving EQ, $\pm 10\text{dB}$ @ 8kHz, 10kHz, 12kHz, and 16kHz.

EQ Input Solo

Activates a mono solo of the equalizer input.

Mid Frequencies

Two peak equalizers overlapping by $\frac{1}{4}$ octave, $\pm 14\text{dB}$ from 150 Hz to 8.5kHz.

Low Frequency

A shelving EQ, $\pm 10\text{dB}$ @ 30Hz, 60Hz, 100Hz, and 150Hz.

EQ In/Out

Allows on/off control of the entire EQ, regardless of boost/cut selections.

Pre/Post Patch

Permits placing the EQ patch before or after the equalizer circuitry.

EQ Assign

Places the equalizer in the channel or monitor section, thereby allowing equalization on or off tape.

HP Filter

An 18dB/octave low cut filter variable from 30Hz to 300Hz. The switch allows on/off control independent of the EQ In/Out switch.

Microphone Preamp Controls

Gain switch allows preamplifier gain control of 12dB-35dB or 30dB-65dB.

Quad Panner

Permits panning of the monitor output into a stereo or quad image. A Mute switch allows muting the mix output.

Monitor To Bus Assign

Sends the monitor signal to the channel assignment section to allow combining prerecorded tracks or using the channel buses as additional effects buses.

Wet

Causes Sends 3 and 4 source to be pre channel output, allowing signal with echo to be recorded on the multitrack tape without potential feedback problems.

Sends

Four mono and one stereo pair of effects/foldback sends. Pre/post switching allows each to be fed from before and after the monitor fader.

Monitor Output Solo

Activates a mono solo of the monitor output. When used in conjunction with the Quad Solo switch (Control Room Monitor Module), it causes all monitor outputs not soloed to mute, very useful during initial setup.

Monitor Input Reverse

Reverses the individual module status from that selected by the Monitor Input Selector (Studio Monitor Module).

Automation Controls

Provides write, update and mute-write control for level and mute automation.

Channel Mic/Line

Permits placing the line input in place of the microphone input, allowing "ping-ponging" or "dumping" of tracks.

Pre Fader Listen Solo

Activates a mono solo of the large fader input.

VCA Reverse

Reverses the individual module status from that selected by the VCA Fader Selector (Studio Monitor Module).

Mute Button

Mutes the large fader output and provides illuminated status indication.

Auto Mute

Connects the large fader mute to the auto-mute bus (Control Room Monitor Module).

Faders

Two Faders are provided. A small fader and a large fader which is VCA controlled. One is always the channel (input) fader and one is always the monitor (mix/effects) fader. Control of either function is via the VCA Fader Selector (Studio Monitor Module).

Group Selector

Assigns large fader control to master fader or either of eight group faders. LOCAL isolates the fader from all external control.

Oscillator/Slate Feed

Routes the oscillator and slate outputs to the monitor mix output (MIX) or the channel outputs (TKS).

Communicate Functions

Provides communications access to the various console outputs via the built in console microphone. Each function includes its own level control and activates control room monitor dim.

Slate

Automatically activates oscillator tone of 20Hz @ -18dB. Assignable to the monitor mix or channel outputs.

Talkback

Talk via the studio monitor system.

Cue

Talk to cue systems.

Oscillator

A self-leveling oscillator assignable to the multitrack or mix outputs to enable precise tape machine alignment.

Mix Boost Controls

Permits up to 10dB of boost to be individually placed on each quad, stereo, and mono monitor mix output.

Monitor Trims

Provide $\pm 5\text{dB}$ trim on individual control room monitor outputs.

Quad Solo Boost

Provides adjustment of the quad solo level to compensate for the level difference between the total mix and the solo input.

Echo Return Pan

Enables panning between odd and even channel assignments. Pan follows the L-R monitor panner.

Cue Select

Sends echo to either of the two stereo cue systems.

Echo Output Solo

Activates a mono solo of the echo return output. Also causes quad solo when used in conjunction with the Quad Solo switch. (Control Room Monitor).

Mute

Mutes the echo return output to the monitor mix.

Aux Meter Selector

Allows source selection for the two auxiliary plasma display meters.

Send Outputs

Six send outputs each provide master send level control with mute and HI/LO frequency equalization.

Stereo Cue Systems

Two stereo cue systems are provided, each with master output level controls. Sources are selectable from the sends or 2 Mix output.

Monitor Input Selector

Permits master selection of all channel monitor sources for line out or tape return.

VCA Fader Selector

Permits placing the VCA faders in the channels for grouping while recording tracks, or in the channel monitor for grouping or automation of the monitor mix.

Control Room And Studio Monitor Selectors

Provides source selection for complete monitoring capability. Monitor mix outputs, send outputs, cue system outputs, as well as three stereo and two four-track inputs may be selected.

Automation Remote

Provides input and output routing for automation data, remote record activation for data tracks, and master automation clear function.

Spectra Vue (Optional)

Permits using the plasma display meters for a 21 band half-octave spectral analysis of any input. Includes automatic gain control (AGC) and may be tied into the console solo system for automatic activation.

Mono

Selects mono operation of the control room monitor, regardless of input selection.

Alternate Center

Permits shifting of the acoustical quad mix center to allow producer or editor a locally optimized mix. Internal presets are provided.

Alternate Speaker

Switches the control room monitor output to an alternate set of amplifier/speakers.

Control Room Dim

Dims the control room monitor output without the need to change level control; for discussions, etc.

Studio Monitor Mute

Provides absolute mute of the studio monitor output.

Group Automation Controls

Provides master write, update, and mute-write control for level and mute automation of channels assigned to that group. LOCAL fader function allows disconnection of that group from VCA master fader control.

Master Automation Controls

Provides master write, update, and mute-write control for all levels and mute automation functions.

Quad To Stereo Pan

Permits folding the rear quad mix channels into the stereo mix.

Mono Solo Trim

Adjusts the monitor level of all mono solos.

Audio Display Functions

Provides complete function control of the plasma display metering.

Master Faders

The combination of input and output master faders permit maximum signal optimization.

VCA Inputs Master

Provides a master level control for all VCA faders.

Mix Outputs Master

Provides a grand master monitor mix output fader.

Quad Solo

Allows all Monitor Solo buttons to function as Quad Solo buttons. During quad solo, all monitor mix outputs not soloed are muted.

Group Faders

Dedicated group master controls for all level and mute functions assigned to that group.

Auto Mute Functions

Allows central muting and unmuting of all faders assigned to the auto mute system.



1400 West Commercial Boulevard, Fort Lauderdale, Florida 33309 USA.
Telephone: (305) 491-0825 Telex: 514362 MCI FTL



1400 West Commercial Boulevard, Fort Lauderdale, Florida 33309 USA.
Telephone: (305) 491-0825. Telex: 514362 MCI FTL.

TWA0500-0005-A